

Yachtfinders/Windseakers
in the heart of
San Diego's boating community

Yachtfinders Windseakers
2330 Shelter Island Drive Suite 207
San Diego, California, US, 92106
Tel:(619) 224-2349



1960 Custom Block Island Boat

San Diego, California

YEAR	LENGTH	BUILDER/MANUFACTURER	PRICE
1960	38 ft	Elite Boat Works, San Pedro, CA	\$89,000

38' Custom Block Island Boat '60 "Scrimshaw"

AN EXCELLENT OPPORTUNITY TO ACQUIRE THIS UNIQUE HISTORIC VESSEL ON A LEASE WITH AN OPTION TO BUY FROM AN ACCREDITED SAILING PROGRAM!!

SCRIMSHAW was born from the noble legacy of the rugged, sea-kindly Block Island Boat of the 1840's. The Block Island Boat's seaworthiness, great handling qualities and the simplicity of the unstayed rig make her a natural for short-handed sailing. It has been said of this wide beamed double-ender that "her motion in a steep short sea is like a rocking chair. She never smashes into a head sea, but rides like a duck, and when on the wind she is always inching to windward, no matter how hard it blows."

Become a part of nautical history by investing in this beautiful vessel, built in 1947, launched in 1960. Prior to donating her to the program in 2020, she was purchased by the previous owner (a professional mariner) in 1976 and has been constantly upgraded and impeccably maintained with the most recent bottom paint being applied in July 2019.

SPECIFICATIONS

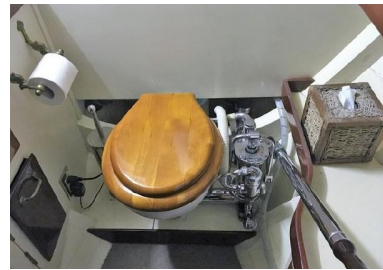
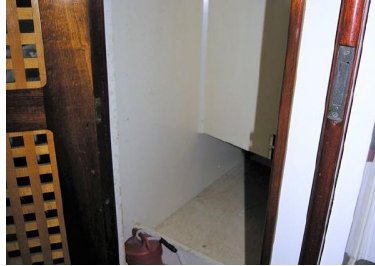
Year Built	1960	Category	Sail	Length Overall	46'6 ft
Length Of Deck	38'8 ft	Beam	13'8 ft	Construction	Wood
Keel	Full Keel	Min Draft	6'1 ft	Drive Type	Direct
Engines	1	Total Engine Power	65 hp	Cruising Speed	7 kn
Prop. Cruise Speed	1700	Maximum Speed	7.5 kn	Range	1,611.09 mi
Fuel Tanks	1	Fuel Tank Cap.	220 gal	Fuel Tank Mat.	Other
Water Tanks	1	Water Tank Cap.	60 gal	Water Tank Mat.	Other
Ballast	14,000 lb	Displacement	38,000 lb		

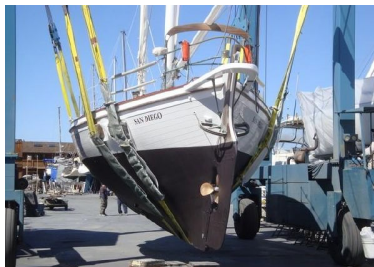
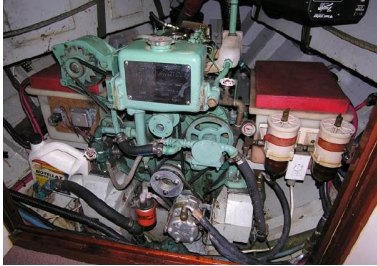
ENGINE 1 SPECIFICATIONS

Make:	Albin	Model:	H-3	Drive Type:	Direct
Fuel:	Diesel	Engine Power:	65hp	Type:	Inboard
Propeller Type:	3 Blade, Bronze	Year:	1960	Engine Hours:	1200

MEDIA GALLERY









Accommodations

Chain locker forward, followed by a centerline head with vanity to port and shelves and locker to starboard. Next aft is the forward sleeping area which features port and starboard single berths with changing settees followed by nicely vented hanging lockers.

The main salon encompasses the primary living area with the galley both to port and starboard of the companionway. A comfortable double berth to port and a dinette with a single sea berth outboard to starboard. Plenty of storage under all berths. The interior is kept light and attractive with white painted ceilings and varnished mahogany trim throughout.

She is kept fresh and airy with eleven opening bronze ports, five dorades and three deck hatches and a Charley Noble above the galley stove.

Headroom is 6'2" in galley, head and fwd cabin; 5'0" in dining area.

Galley

Fleming cold plate refrigerator with freezer, 110V and engine driven

4-burner Marine Fittings stainless stove with infrared broiler

Hot and cold pressure fresh water system

Deep double stainless steel sink

Galley storage is excellent and convenient with slide out racks for dishes and drawers for spices and cutlery.

Electronics and Navigation

Lorad LDX-600 digital depth sounder

Southwest Instruments binnacle compass

Second compass installed in dinette table

Icom IC-M127 VHF radio

Brass thermometer, clock and barometer

Inclinometer

ProAudio AM/FM/CD/DVD player with Clarion disc changer and Delta controls

LG 32" TV

Electrical

12V DC and 110V AC

Engine start batteries - (2) 6-Volt deep cycle in series – 440 amp hours

House batteries - (2) 6-Volt deep cycle in series – 440 amp hours

Battery parallel switch

Heart Interlink 2000 battery monitor

Heart Interface battery charger
Heart Interface Freedom 10 2.5kw
Shore power cord

Deck

Dual bow rollers
45# CQR with 400' 3/8" BBB chain
Plath manual windlass
Sail covers
Full, well-vented boat cover
Life raft canister cover
Covers for propane bottles
Avon dinghy with 15hp 4-stroke Yamaha
Anchor and steaming lights
Running lights
Bow pulpit and rails
Lifelines and stanchions
Boarding gates
Dock lines and fenders
Outboard mount
Life raft canister used as deck storage locker only
Deck storage box
(2) deck mounted propane bottles
Cockpit cushions
Twin helm seat with reversible backrest
Spare stern anchor with tackle

Hull

LOA, including anchor and boom overhangs: 46'6"
Last bottom paint July 2nd 2019
Hull fastened with galvanized fasteners
Carvel plank Port Orford cedar hull – 1 1/2" net thickness over bent and sawn oak frames
Built by Elite Boat Works in San Pedro, CA

Sails and Rigging

Unstayed rig
Wood, keel-stepped masts
Canadian spruce tree heart masts, gaffs and booms
Whisker pole
(2) Harken 48 ST 2-speed primary winches
(1) bronze cabin top main sheet winch
Main sail (new 2017)
Foresail (new 2017)
Staysail or golly (2017)
Steadying sail for motor sailing or at anchor

Engine and Mechanical

Bilge blower
Emergency engine stop
Engine alarm
Fram oil filter
(2) inline Racor fuel filters
Raw water sea strainer
Cockpit engine controls
CO2 manual engine fire extinguishing system
(1) manual and (1) electric bilge pump
Manual wheel steering with cable to rudder quadrants
Manual Wilcox Crittenden head

12V Pur watermaker (pickled)

Engine located beneath cockpit

1 1/2" stainless shaft with shaft break and Tides dripless shaft seal

Engine rebuilt in 2010

Safety

(6) life jackets

(2) fire extinguishers

Bell, horn and whistle

Emergency tiller

Flares

(2) horseshoe type buoyant cushions

Disclaimer

The Company offers the details of this vessel in good faith but cannot guarantee or warrant the accuracy of this information nor warrant the condition of the vessel. A buyer should instruct his agents, or his surveyors, to investigate such details as the buyer desires validated. This vessel is offered subject to prior sale, price change, or withdrawal without notice.

© 2020 Boats Group